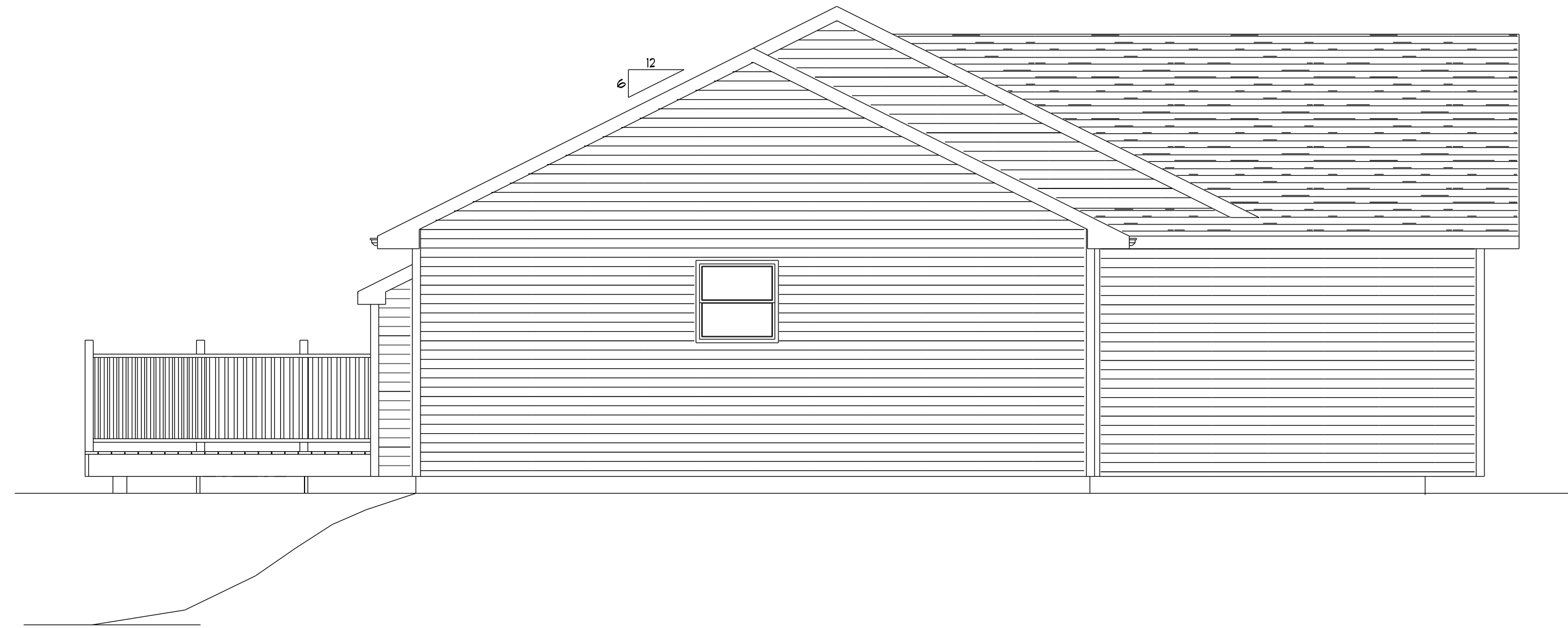




FRONT ELEVATION
SCALE: 1/4" = 1'-0"



LEFT ELEVATION
SCALE: 1/4" = 1'-0"

GREAT CARE AND EFFORT HAVE GONE INTO THE DESIGN AND ENGINEERING OF THE PLANS TO MEET THE SPECIFICATIONS SET FORTH BY THE CONTRACTOR AND/OR HOMEOWNER IN COMPLIANCE WITH BUILDING CODE REQUIREMENTS. CONTRACTORS SHALL VERIFY AND BE RESPONSIBLE FOR ALL DIMENSIONS, SPECIFICATIONS AND CONDITIONS ON THE JOB.

DELTON SCHOOLS
CONSTRUCTION TRADES

DATE	APPROVED BY	DRAWING NUMBER
6/26/12		071021
AS NOTED	CHECKED BY	
11/15	9/4/12	

Barry County Lumber

215 S. MAIN ST. - BIRMINGHAM, AL 35203
205-978-1234
www.barrycountylumber.com